

Aims for a civilized society

- A global set of ethics leading to sustainable occupation of the planet by humans
- A right to food, water and shelter
- A right to access soil and water for the growing of food
- An expectation of care and security
- A respect for 'difference'

Alternative legal and financial structures



Access to land

- Community gardens & city farms
- Freehold and shared private land
- Lease
- Sharefarming
- Guerilla gardening
- 'Ripe near me', 'Jolly harvest'
- Urban farming
- Landshare

get involved →

02691

MEMBERS SO FAR!!

LATEST GROWER EXPLORER FROM ▶

[FIND OUT HOW IT WORKS](#)



I WANT TO } FIND LAND OFFER LAND HELP OUT

LATEST FROM THE NEWS



10 Good Reasons to Go Organic
Posted on 2nd July 2013

66 Landshare Australia's Phil Dudman lists 10 good reasons growing your own organic food

[Read full post](#)



LATEST LAND WANTED

MG IMAGES
Location:
Posted by [mg-images](#) on 6th May 2015
the Newcastle area LAND NEED PLEASE

Seeking Garden Space
Location:
Posted by [sj08ee](#) on 4th May 2015
We're currently seeking a small plot to grow a vegetable garden. We run a start

LATEST LAND OFFERED

Gleneden Organic Farm and The Gleneden Bullock Team
Location:
Posted by [Gleneden Organic Farm and The Gleneden Bullock Tea](#) on 1st May 2015
We are a young family recreating our great-grandfathers family run mixed farm a ...

Isis Waters
Location:
Posted by [nurturing1](#) on 14th April 2015
We have 145 acres 10 mins from Childers in QLD. It is divided and bushy. We are

TALKING LANDSHARE

Introduce Yourself!
Give us a little info about yourself, your experience, what you are currently a ...
By [sparky301983](#) on 11th November 2013 in [Adelaide Amateur Growers](#)

Herb & Cottage Garden Society Sydney - Hornsby Kuring gai local Garden Group
We are looking for new members to join our creative and active group of Herb to

Landbanks

- A land bank is a public authority created to efficiently hold, manage and develop tax-foreclosed property
- Generally, land banks are funded by local governments' budgets In addition, a land bank is a powerful locational incentive, which encourages redevelopment in older communities that generally have little available land

A recognised business in primary production

- a significant commercial activity
- purpose and intention to engage in the activity
- an intention to make a profit from the activity
- the activity is or will be profitable
- repetition and regularity of activity
- carried on in a similar manner to that of the ordinary trade

- activity organised and carried on in a businesslike manner and systematically - records are kept
- size and scale of the activity
- not a hobby, recreation or sporting activity
- a business plan exists
- commercial sales of product
- taxpayer has appropriate knowledge or skill

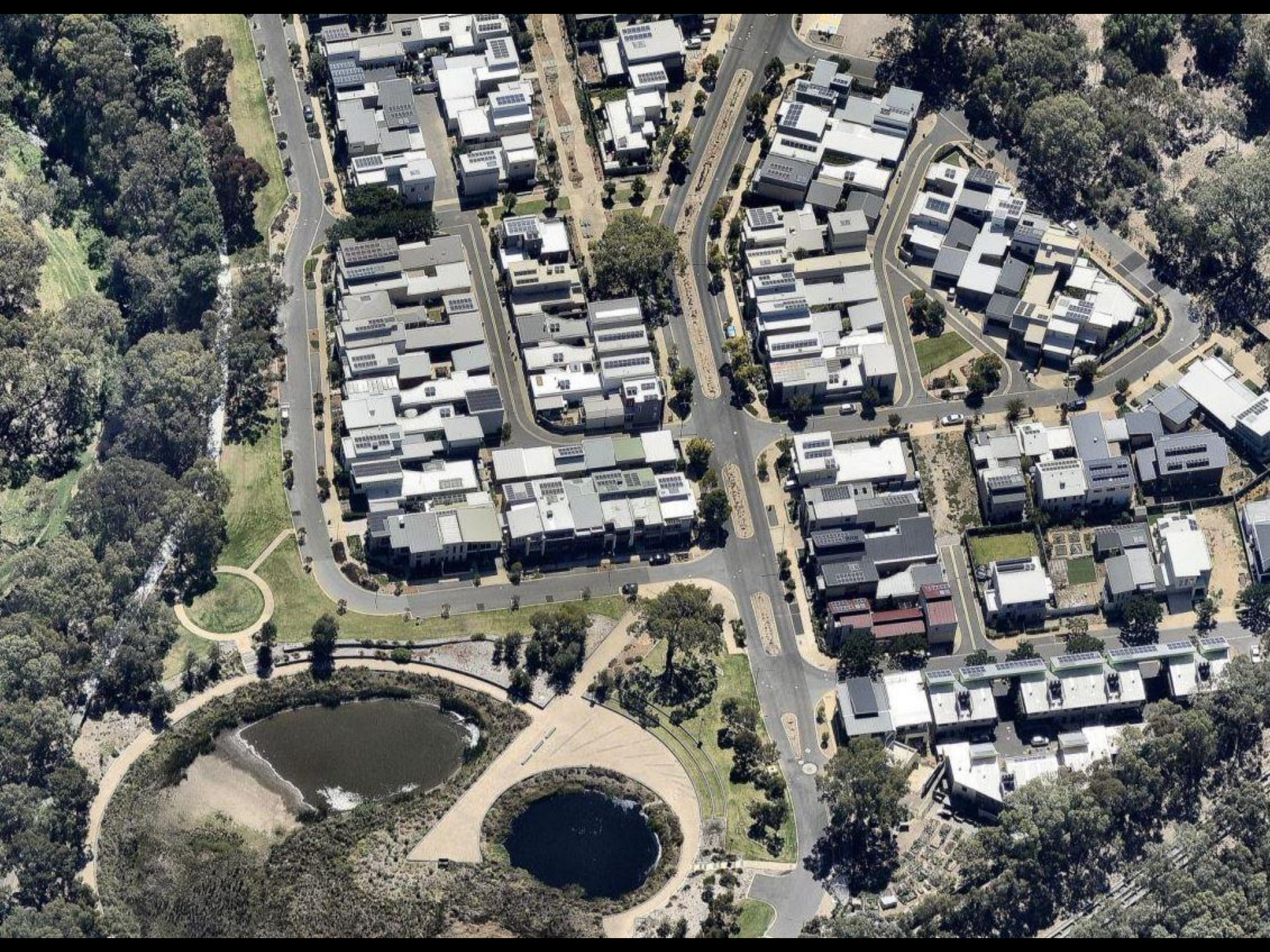
- An advantage of Primary Producer status is 'tax averaging', where income from 5 years is averaged to prevent over-taxation in good years
- Losses made as a primary producer can be carried forward and offset against taxable income in future years

Claiming tax offsets for business losses

- This applies to **sole traders and individual partners in a partnership only**.
- You can offset the loss against your other income (eg wages) if **any one** of the following applies:
 - your business is a primary production business and you make less than \$40,000 in an income year from other sources
 - your income is less than \$250,000, and either:
 - your business income (turnover) is at least \$20,000 in the income year
 - your business has produced a profit in three out of the past five years (including the current year)
 - your business uses, or has an interest in, real property worth at least \$500,000, and that property is used on a continuing basis in a business activity (this excludes your private residence and adjacent land)
 - your business uses certain other assets (excluding motor vehicles) worth at least \$100,000 on a continuing basis.
 - you have been granted a Commissioner's discretion eg for forestry.
- If you do not meet any of these requirements, you can still defer the loss or carry it forward to future years. If your business makes a profit in a following year, you can offset the deferred loss against this profit

Claiming tax offsets for losses

- You have an assessable income of under \$40000 from non ag sources
- You made a profit in 3 of the last 5 years
- You have a turnover of at least \$20000
- You are using a piece of land worth at least \$500000
- You have on-farm assets of at least \$100k
- The Commissioner can make exceptions eg for forestry



Sustainable human settlements

- Living at or close to where you work
- Telecommuting
- Local re-use and recycling
- Shared community resources
- Productive landscapes with food production, bikeways, wetlands, parks, forests

Friland - Denmark

Rules

- Your house is just a place to live, not something to profit from (max selling price approx \$850 per m²)
- At least one member of the household must work in the local community
- No waste
- Mortgage-free (young people's blocks)

Business and land ownership structures

- Sole traders
- Partnerships
- Cooperatives (trading and non-trading)
- Cohousing
- Associations
- Not for profit organisations and charities
- Corporations and companies
- Trusts and foundations
- Community title

Financial alternatives

- local currencies
- revolving funds
- Coop banking
- ethical investment
- super (ethical choices) (self managed super)
- home building clubs
- markets and barter
- Csa_s
- wwoofing

A new governance and economic system

- Cooperative rather than adversarial politics (natural law party)
- Cooperation rather than competition in business (eg 'compost for soils')
- Bioregionalism and autonomy
- Catalonia

	Basque Country	Galicia	Catalonia
Law, Order & Justice			
Police	Partial	Partial	Partial
Public Safety (Civil protection, Firearms, gambling)	Shared	Shared	Shared
Civil & Administrative Law (Justice, Registries, Judicial Appointments)	Exclusive	Exclusive	Exclusive
Child & Family Protection	Exclusive	Exclusive	Exclusive
Consumer Protection	Exclusive	Exclusive	Exclusive
Data protection	Shared		Shared
Civil registry & Statistics	Exclusive	Exclusive	Exclusive
Health, Welfare & Social Policy			
Social Welfare	Exclusive	Exclusive	Exclusive
Equality			Exclusive
Social Security	Shared	Shared	Shared
Employment	Shared	Shared	Shared
Health Care	Shared	Shared	Shared
Benevolent/Mutual Societies	Administrative	Administrative	Shared
Economy, Transport & Environment			
Public Infrastructure (Road, Highways)	Exclusive		
Public Infrastructure (Rail, Airports)	Shared	Shared	Shared
Environment (Nature, Contamination, Rivers, Weather)	Exclusive	Exclusive	Shared
Economic Planning & Development	Exclusive	Exclusive	Shared
Advertising, Rgional Markets and regional controlled origin designations	Exclusive	Exclusive	Exclusive
Professional associations	Exclusive	Exclusive	Exclusive
Workplace & Industrial safety	Partial	Partial	Partial



Barcelona

- 2000ha of agricultural land adjacent to the airport is protected. There are 600 farms.
- The population of Barcelona pays premium prices for the local produce and supports 30 farmers markets.
- Whilst promoting food value-adding the authority ran skills-upgrade courses for farmers and encouraged the them to become certified organic growers.
- Organic growing provided premium prices & avoided clashes between urbanites and nearby conventional farmers spraying toxic chemicals.
- http://www.urbanagricultureeurope.la.rwth-aachen.de/files/callau_montasell_rural_near_the_city.pdf