

Patterns

- A successful assembly of components or way of moving energy
- An expression of efficiency
- Patterns express energy in action eg on and off-shore winds
- Pleasing? eg music – harmonic/discordant
- Reflected in behaviour eg cows graze & chew cud
- A good designer recognises and uses patterns

Wind interacts with geology to produce the dune-swale country on Eyre Peninsula



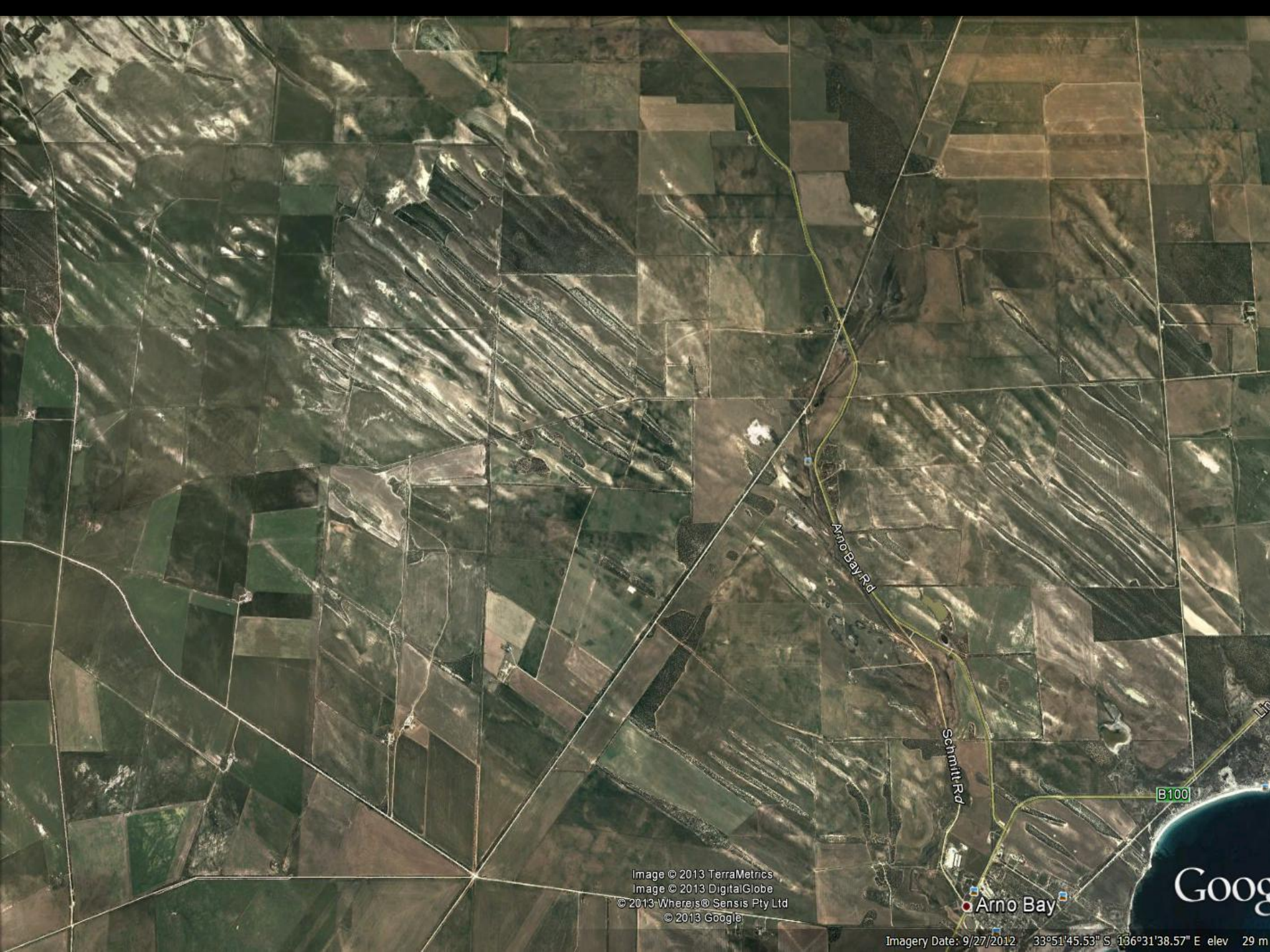


Image © 2013 TerraMetrics
Image © 2013 DigitalGlobe
© 2013 Whereis® Sensis Pty Ltd
© 2013 Google

Imagery Date: 9/27/2012 33°51'45.53" S 136°31'38.57" E elev 29 m

B100

Arno Bay

Goog







Rhythms, pulses, resonance, music

Transmission of energy

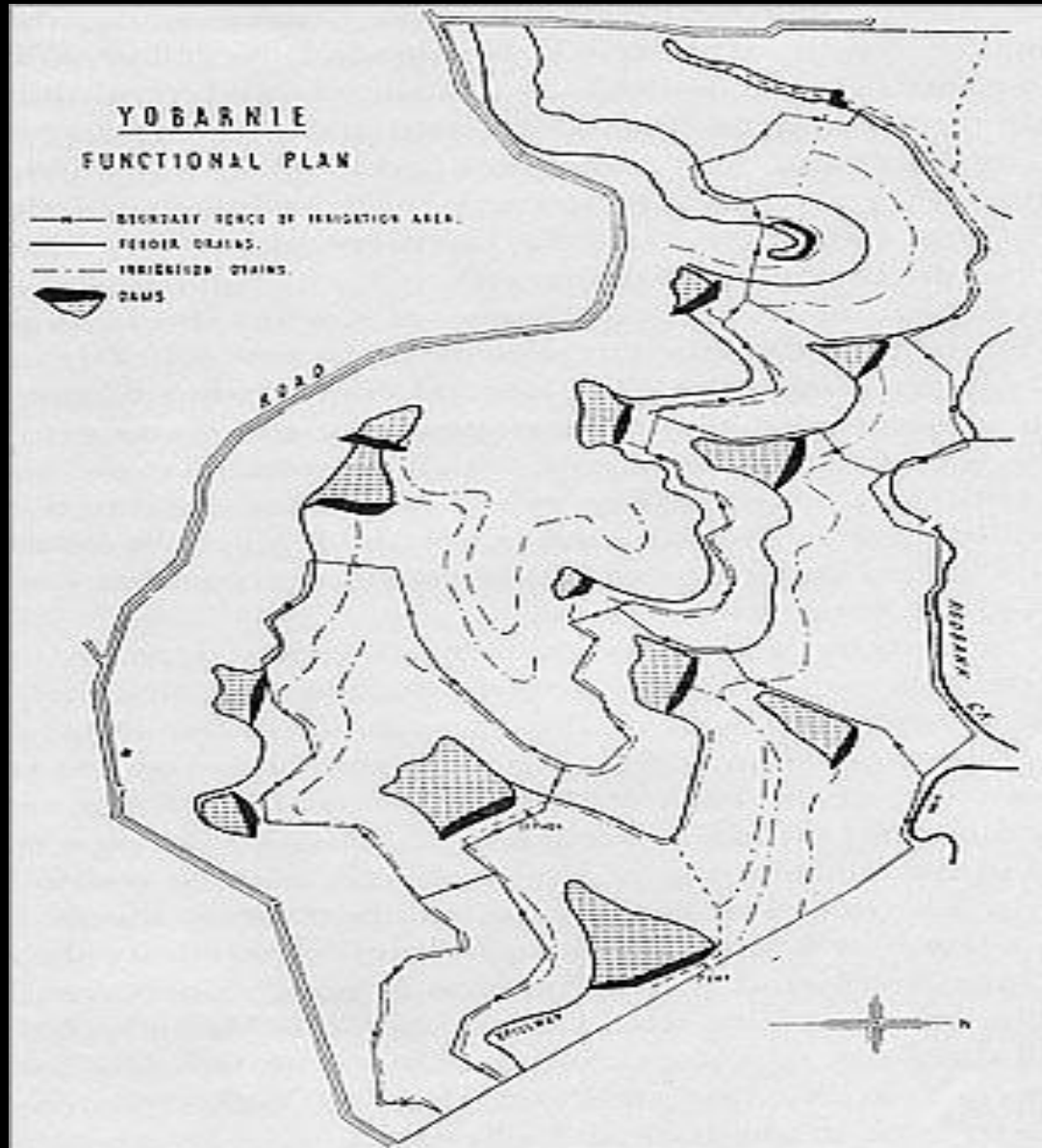
Effective, efficient, comfortable

Functional, relationships (zones?)

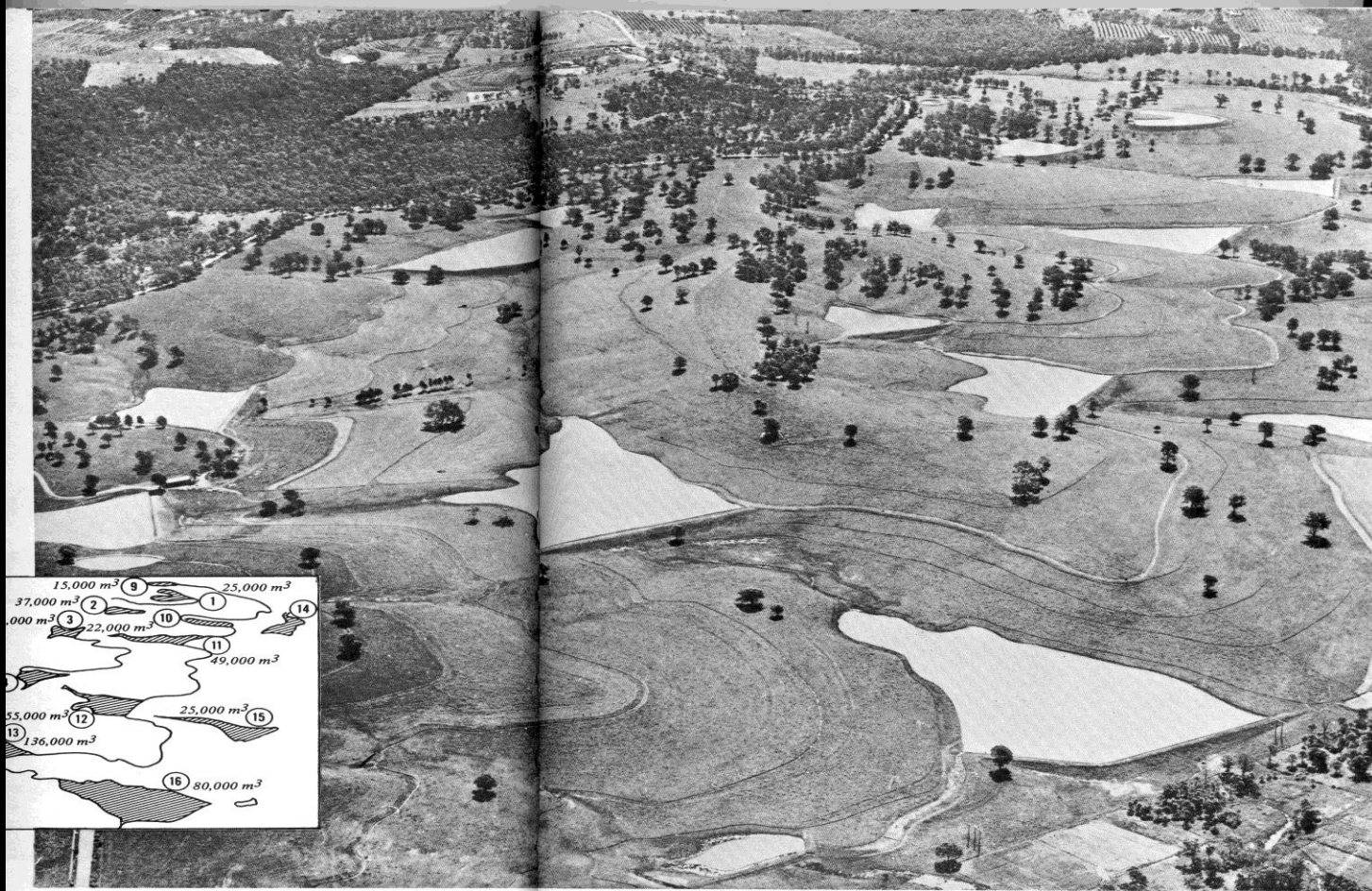




Keyline design for Yobarnie

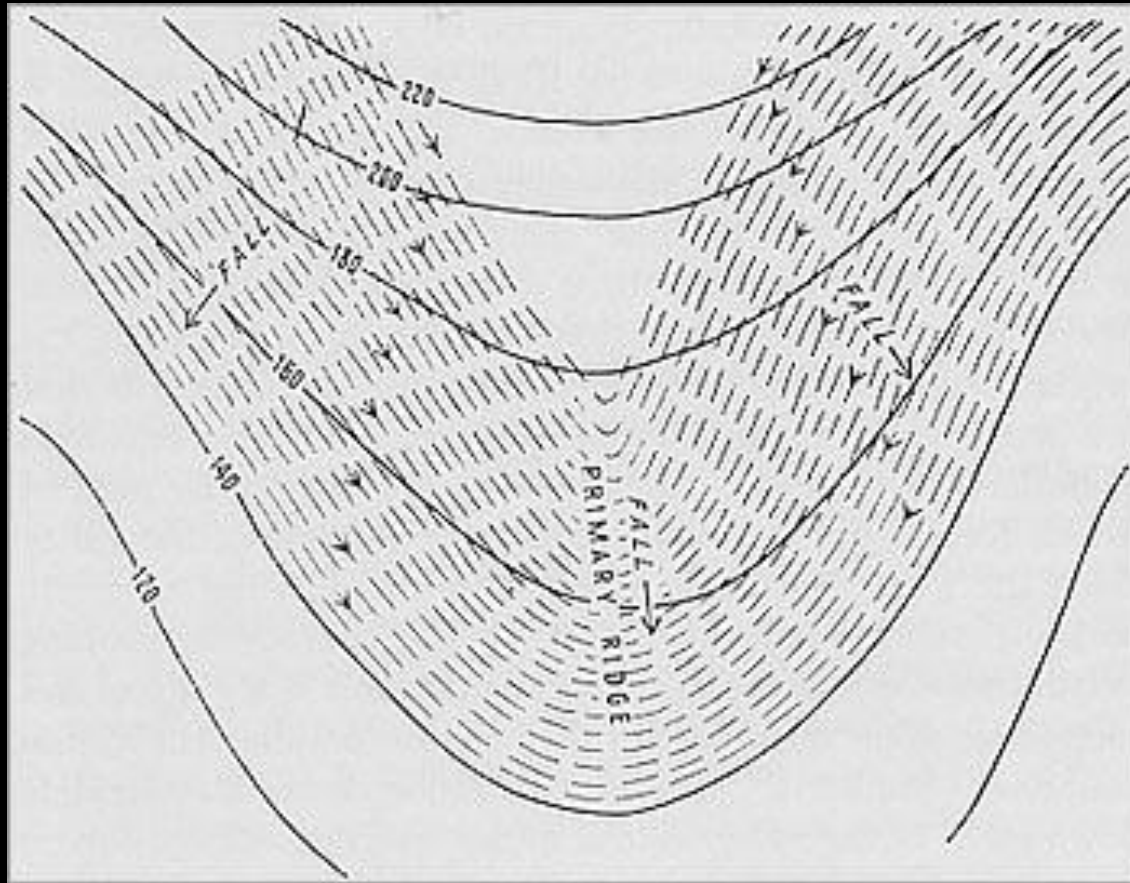


Yobarnie



Keyline ploughing detail

- water moved onto the ridge

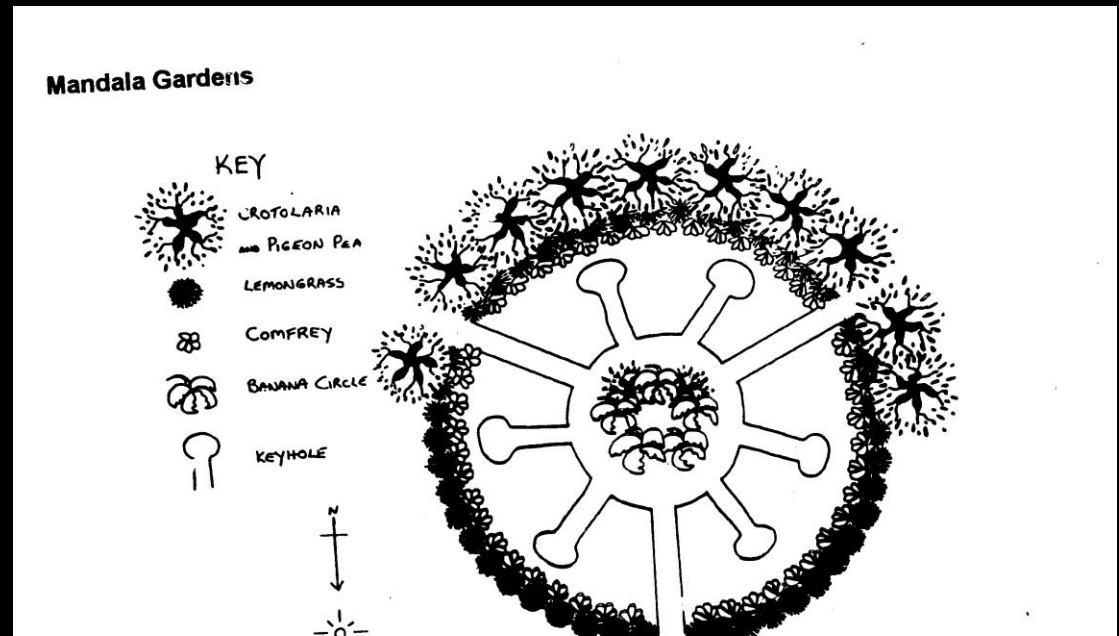


Erosion, deposition and meandering



Patterns

- Sun dials and calendars
- Tides and moon planting
- Venturi effect
- Solar and moon cycles (Milankovitch)
- Edge effect



orchard design, pollination



A pattern language

Christopher Alexander

Master plan for urban design

Biophilia – an important pattern in human behaviour

Biophilia is the inherent human affiliation with nature. It has powerful effects on people's health and well-being through interaction with plants and the natural world, occupations such as gardening and the design of the built environment



Designs that include nature work best

- Over 99% of the evolution of our species was spent in nature, not cities, so it is little wonder that stress levels fall in a leafy , natural space and
- productivity
- problem solving
- attention
- healing rates of injuries all rise.

Scientific studies demonstrating the effect of Biophilic design

Repetitive work such – as in a factory

22% increase in productivity, 20% increase in well-being. Lower absenteeism

Recovery time from surgery shortened and less analgesics required

Reduction in the expression of ADD and autism



Biophilic design features

- Natural building forms and less straight edges
- Real plants and water (KL)
- Nature sounds
- Sculptures and features with natural form
- Natural colours and patterns
- Height and real light
- Naturally patterned shading



N

210 m

Image © 2008 DigitalGlobe

Google



2



Image © 2008 DigitalGlobe

41 m

Google



Village Homes

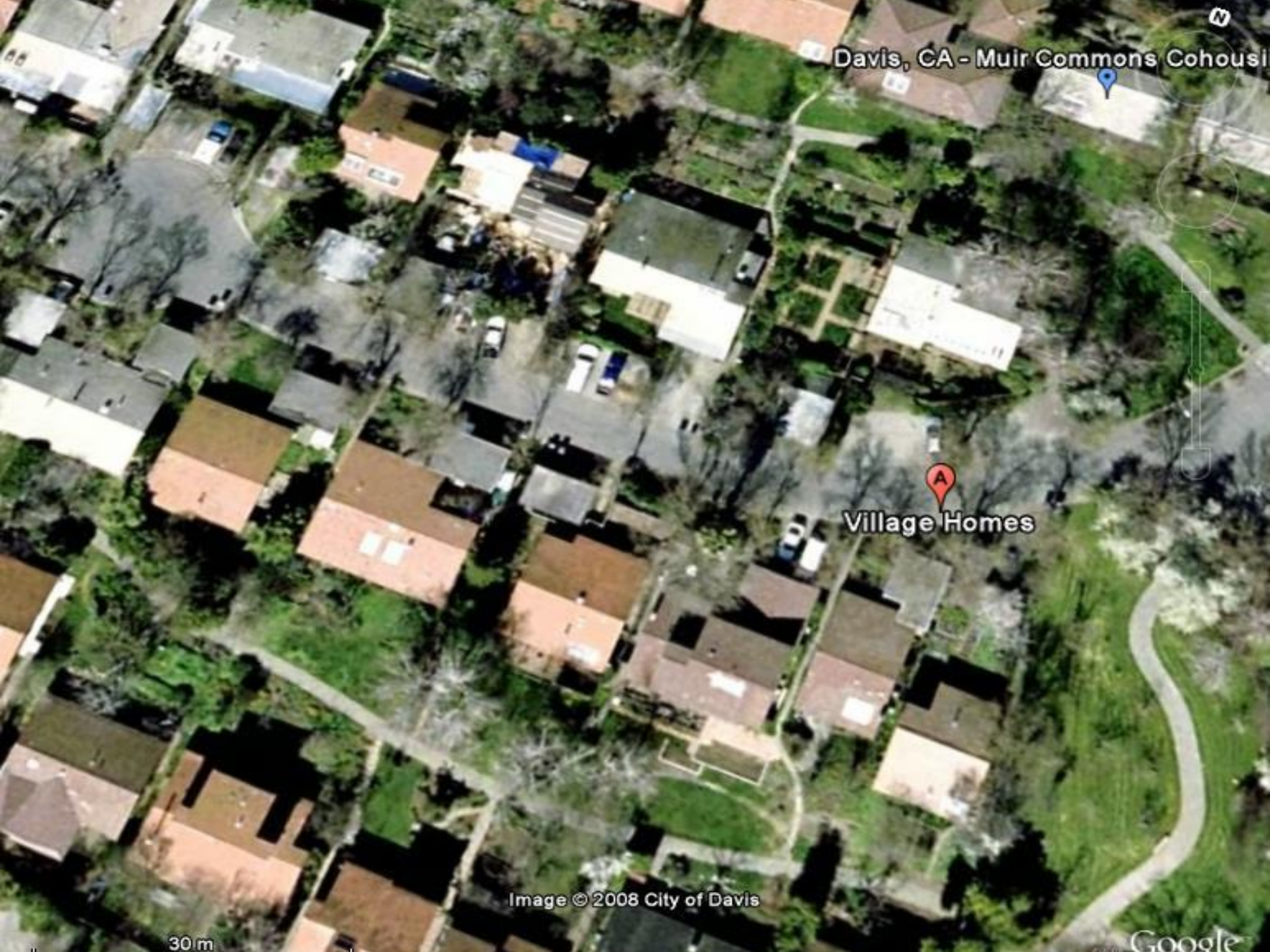
Davis, CA - Muir Commons Cohousing/The...

Village Homes

Image © 2008 City of Davis

101 m

Google



Davis, CA - Muir Commons Cohousing



Village Homes

Image © 2008 City of Davis

30 m

Google



Image © 2008 City of Davis

49m

©2008 Google



Aldinga SA, Australia



Image © 2008 DigitalGlobe
Image NASA

146 m

© 2008 Google



Aldinga Arts Eco-village – backing homes onto waterways and dams

Image © 2008 DigitalGlobe

96 m

© 2008 Google



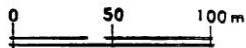




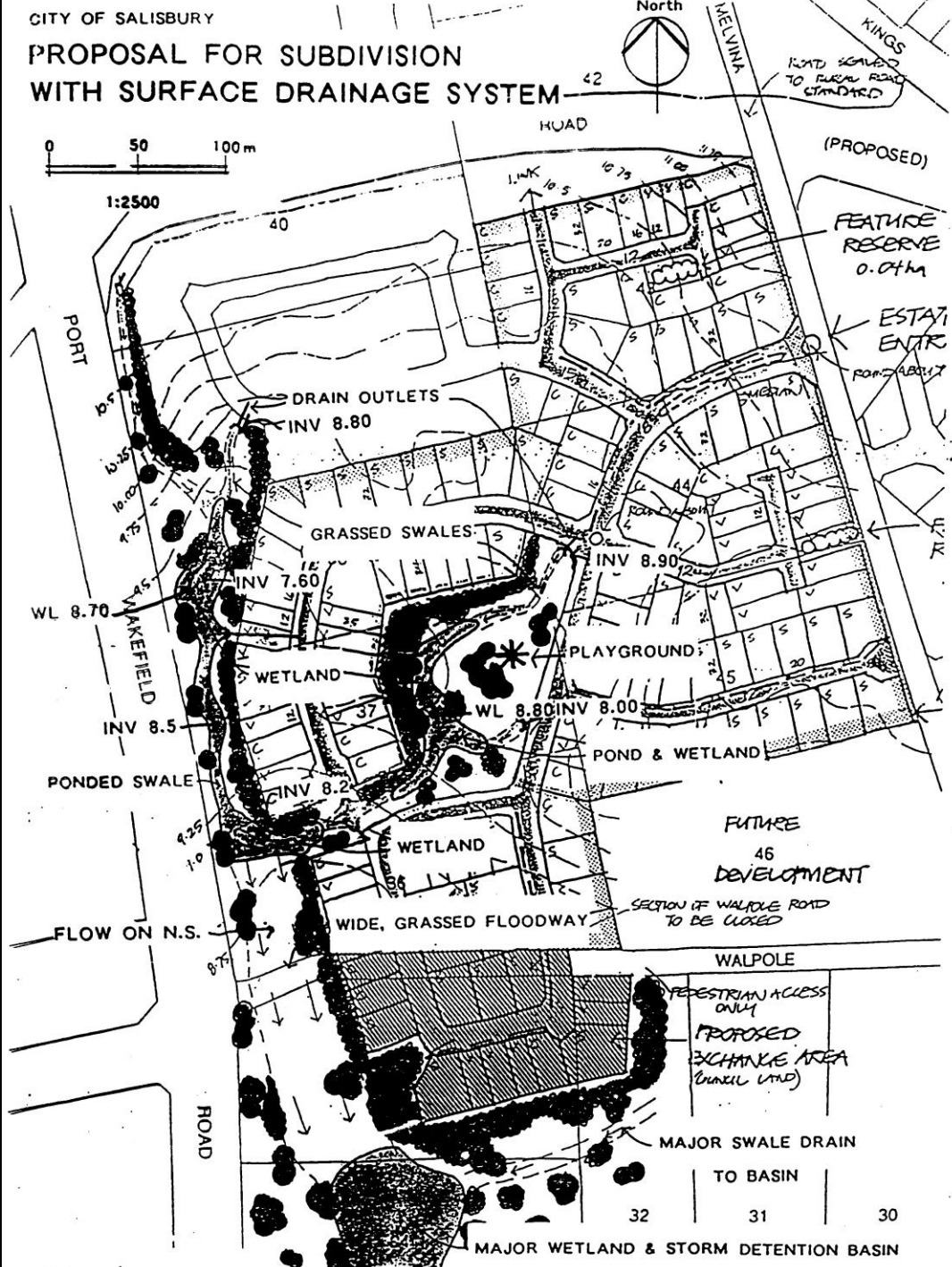


PROPOSAL FOR SUBDIVISION WITH SURFACE DRAINAGE SYSTEM

42



1:2500



ROAD GRADED TO RURAL ROAD STANDARD

(PROPOSED)

FEATURE RESERVE 0.07ha

ESTATE ENTRANCE FROM ALBERT ROAD

FE

FUTURE 46 DEVELOPMENT

SECTION OF WALPOLE ROAD TO BE CLOSED

WALPOLE

PEDESTRIAN ACCESS ONLY
PROPOSED EXCHANGE AREA (COUNCIL LAND)

MAJOR SWALE DRAIN TO BASIN

MAJOR WETLAND & STORM DETENTION BASIN

32

31

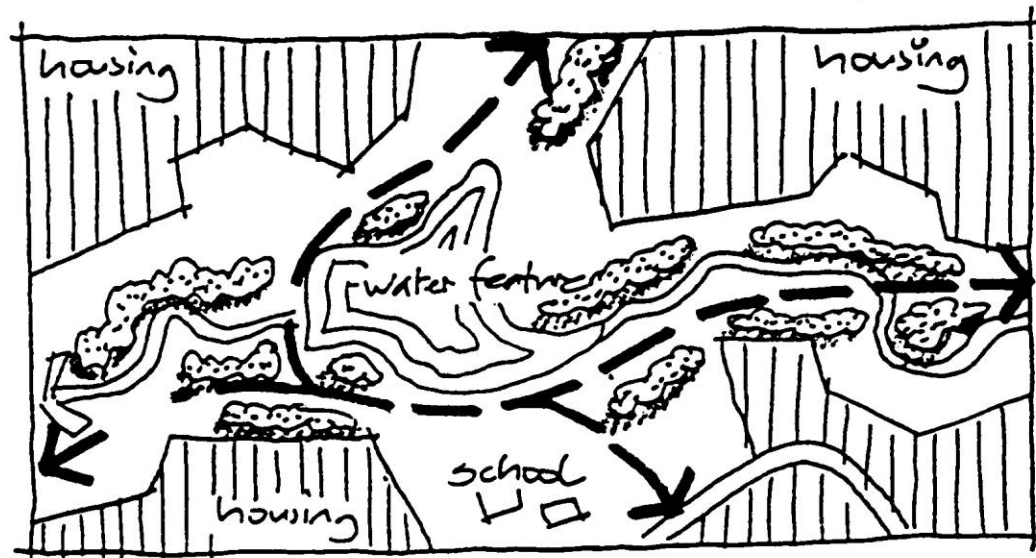
30

5.4 LINKING THE OPEN SPACE SYSTEM

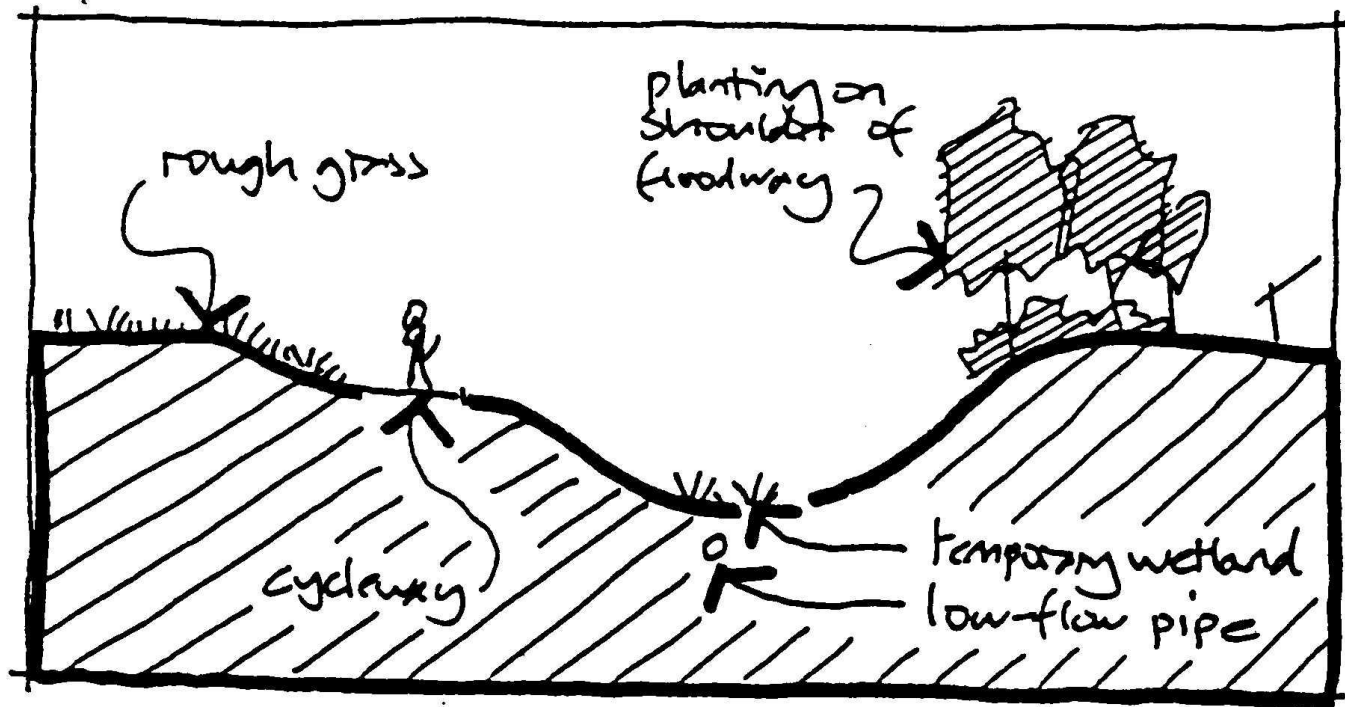
The integration of recreation settings and provision of links with their urban context should be primary objectives of open space design. As illustrated in Figure 4, two forms of linkage should be developed for dual use systems:

- Longitudinal links which tie the system together along the drainage pattern.
- Transverse links which provide access from adjoining residential areas and to other (non-drainage) open space.

Figure 4: Linking the open space system - concept sketch

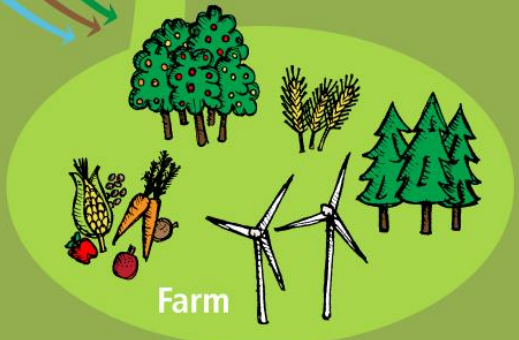


Floodway guidelines - concept sketch

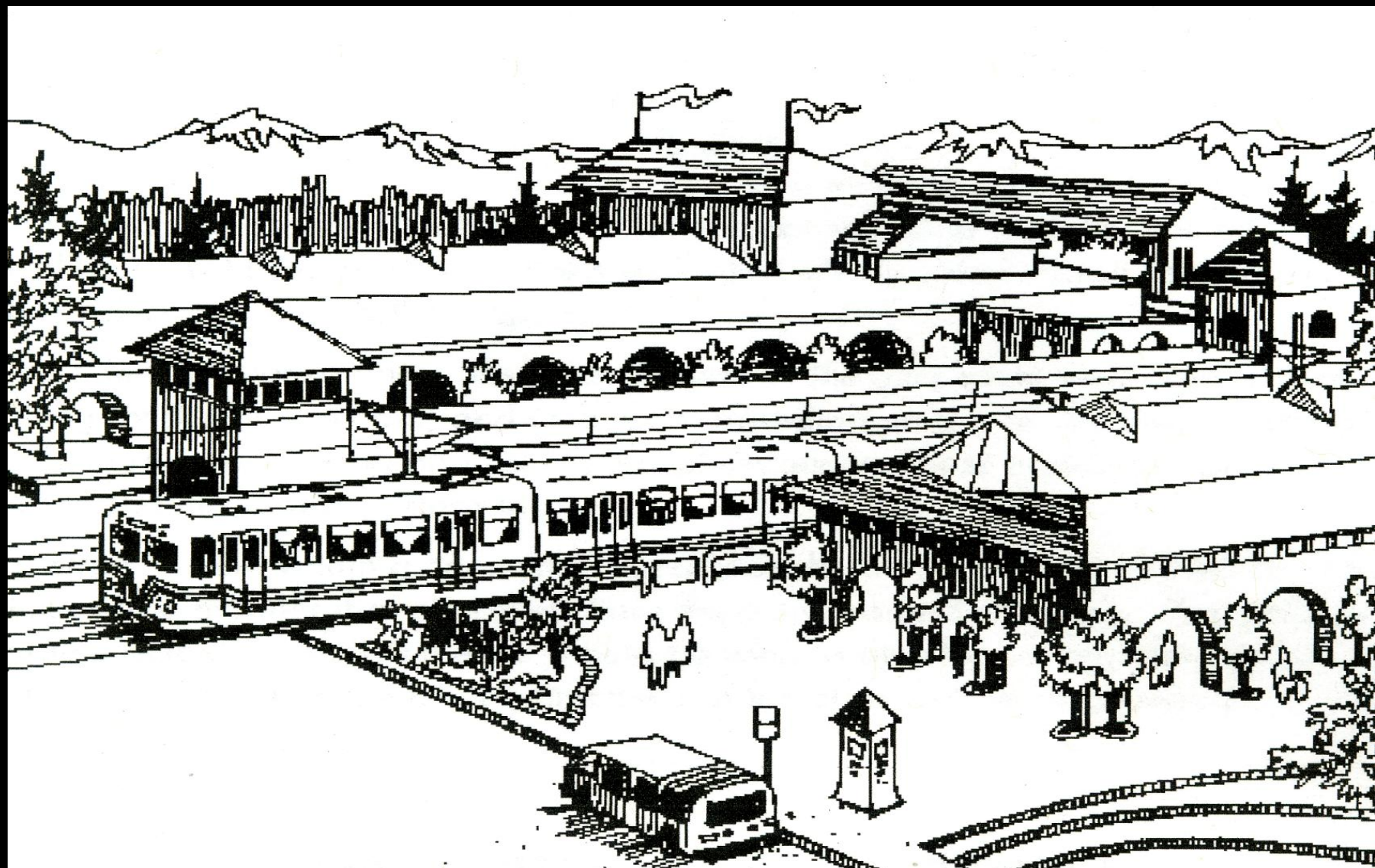




-  Light Rail
-  Heavy Rail
-  Interchange
-  Bus
-  Bike Corridor
-  Community Gardens & Urban Orchards
-  Farmers Markets
-  Stormwater Capture & Aquifer Recharge
-  Sewerage Treatment & Recycling Plants
-  Green & Food Waste Recycling Depots



Transit hub – pedestrians and midi buses meet rail







Community Gardens



Community Gardens

cultivating community

<p>Community Gardens If you live here and want your own garden space, please Cultivating Community on 9415 6580. Cultivating Community supports tenants in Community Gardens.</p>	<p>社區花園 如果您在此居住，想有自己的花園地塊，請電Cultivating Community，號碼9415 6580。Cultivating Community對社區花園中向租戶提供支持。</p>
<p>Κοινωνικά Κήποι Αν κατοικείτε εδώ και θέλετε το δικό σας παρτέρι στον κήπο, επικοινωνήστε στην Υπηρεσία Κοινωνικής Καλλιέργειας (Cultivating Community) στο 9415 6580. Η Κοινωνική Καλλιέργεια υποστηρίζει τους ενοίκους στους Κοινωνικούς Κήπους.</p>	<p>Con Vajzaab Sibikoom Yog koj nyob haan lat xee no thabx xee muaj ib qhov av xeeab, hu xeeaboj tauj rau Lub Tsev Sab kev Uxatob 9415 6580. Lub Tsev Sab kev Uxatob muaj kev pab rau cov neeg ntawv tauj nyob toog cov vajzaab sibikoom haan xee.</p>



ABONOS YES SI
VERDURAS FRUTAS HIERBAS ESPECIALES ARROZ PLANTAS VIEJAS

NO
NARANJAS - CEBOLLAS CARNES - ALICORNOS DERIVADOS DE LECHES NINGUN TIPO DE PLASTO MALAS HERRAMIENTAS PLANTAS CON ESPEROS

CUIDANOS EN EL JARDIN

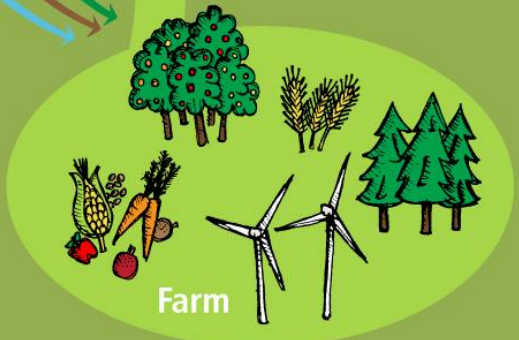
FOR NO EASY

DO NOT





-  Light Rail
-  Heavy Rail
-  Interchange
-  Bus
-  Bike Corridor
-  Community Gardens & Urban Orchards
-  Farmers Markets
-  Stormwater Capture & Aquifer Recharge
-  Sewerage Treatment & Recycling Plants
-  Green & Food Waste Recycling Depots



Farmers Markets

Direct from grower to consumer

